

PIVOT OPTIONS

TOWABLE SYSTEMS

• Movable or towable units are always moved in the direction of the machine itself. The movable pivot rides upon a trolley and the wheels can be set pointing perpendicular to the shaft, for movement.

PERMAPIPE

• The spans provide the solution for corrosion problems by lining the internal surface of its galvanized pipes with a high-density polyethylene (HDPE).

• Lined pipe with HDPE does not require gaskets between flanged pipes because of the unique mold-a-flange technology, which makes sealing an integral part of the liner material.

For more information check Permapipe catalogue.

FERTIGATION EQUIPMENT

• Fertigation equipment comprises a dosing pump that can be regulated (percentage) and an electrical stirrer, together with the corresponding accessories for injecting the fertilizer into the main water flow.

• The most common flows for dosing pumps are 200, 300 and 500 litres/hour, although others are available.

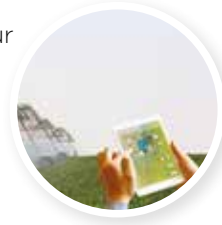
• The system can be placed at the head of the water supply or the foot of the pivot.

iControlRemote

• It is a remote irrigation management product that uses GSM technology to monitor and manage your irrigation systems.

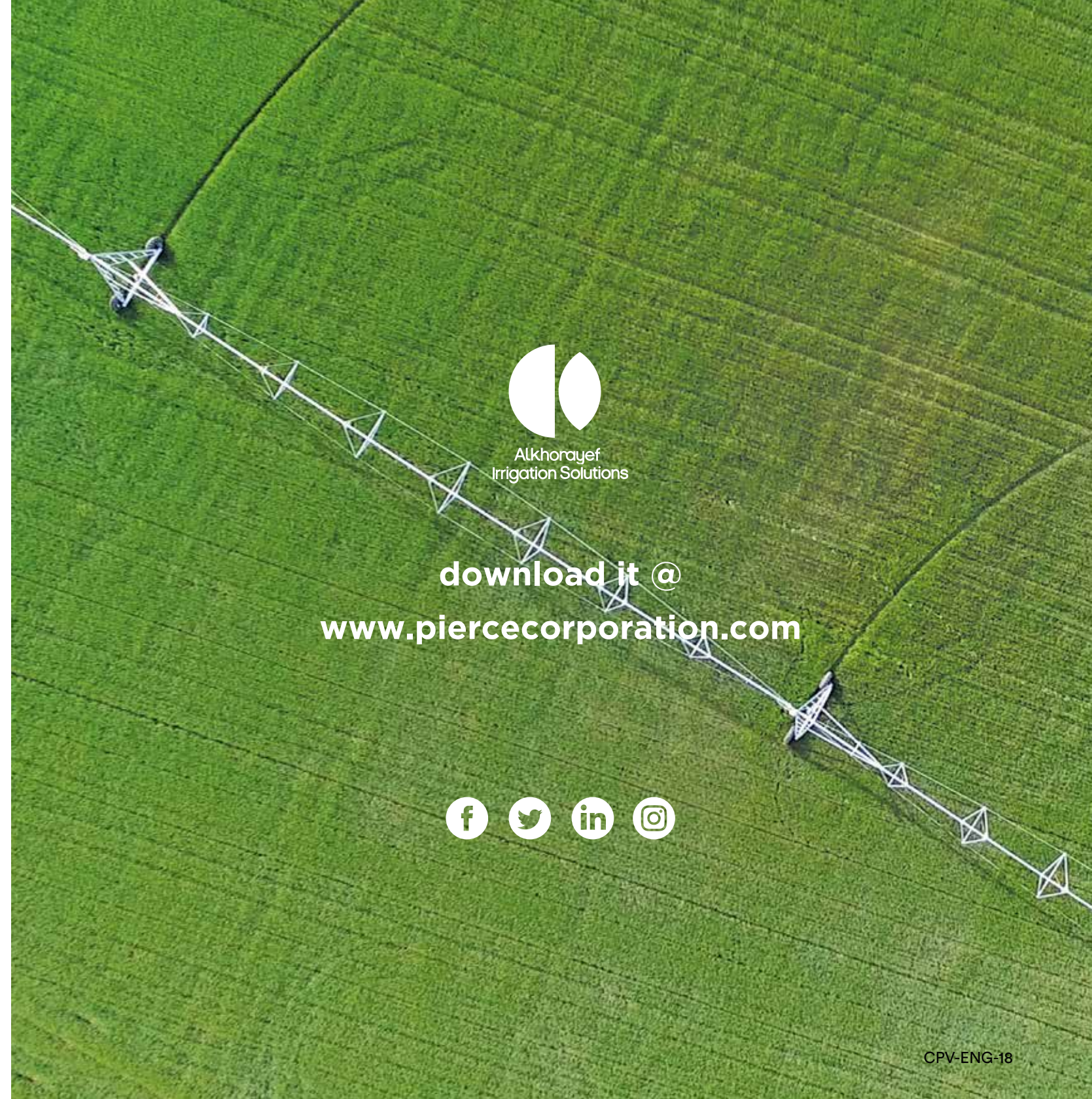
• **iControlRemote.com** website allows you to monitor the current status of your irrigation systems including current end pressure, speed percentage, angle, endgun, total hours running and total hours with water.

For more information check iControlRemote catalogue.



Span Length		Diameter	
Spans		inches	mm
m	feet		
38.38	125'7"	5"	127
44.22	145'1"	5"	127
50.17	164'7"	5"	127
56.11	184'1"	5"	127
38.38	125'7"	6"5/8	168.3
44.22	145'1"	6"5/8	168.3
50.17	164'7"	6"5/8	168.3
56.11	184'1"	6"5/8	168.3
62.05	203'7"	6"5/8	168.3
38.38	125'7"	8"5/8	219.1
44.22	145'1"	8"5/8	219.1
50.17	164'7"	8"5/8	219.1

Overhang Length	
m	feet
1.8	6
3.7	12
5.9	19.5
7.8	15.5
9.6	31.5
11.9	39.5
13.7	45
15.5	51
17.8	58.5
19.7	64.5
23.8	78
25.6	84



Alkhorayef
Irrigation Solutions

download it @

www.piercecorporation.com



CPV-ENG-18

CENTER PIVOT



Pierce

Why Pierce?

Durability and Reliability

SEE HOW QUICKLY YOUR MACHINE PAYS FOR ITSELF.

PIERCE pivots are designed to work long hours and give you plenty of satisfaction.

They operate under the most extreme conditions, on almost any surface, and with any type of water.

Design and Experience

SAVE TIME AND MONEY.

More than 25,000 irrigation systems sold in over 80 countries have proven that we offer the best irrigation equipment.

Don't stop Irrigating

WE KNOW HOW IMPORTANT A DAY WITHOUT WATER IS.

We have the parts you need for your PIERCE machine. Through our extensive Official Distributor network, and the best warranty programme on the market, we make sure your irrigation system never stops working.

Higher Productivity

YOU'LL THINK YOUR CROP IS GROWING ITSELF.

We supply a customised irrigation chart, specifically designed to meet your needs.

Maximum Quality

WE MAKE SURE YOU GET THE BEST FOR THE SAME MONEY.

All PIERCE pivots are manufactured under strict ISO 9001 quality standards. The quality of their components is the highest on the market.

Customer Service

Service DON'T WORRY ABOUT THE MACHINE.

Our technicians and distributors will advise you on what machine to buy. They'll install it for you and offer their services to provide the maintenance required to ensure guarantee.

① PIVOT POINT

- Constructed with extra cross-ties to support spans length up to 62m (203.5')
- Stainless steel swivel elbow
- The **collector ring**, which prevents the electrical cable from breaking as the machine turns.
- The riser pipe is equipped with a unique conduit seal to insure leak free smooth rotation.
- Movable trolley with 4 wheels as an option.

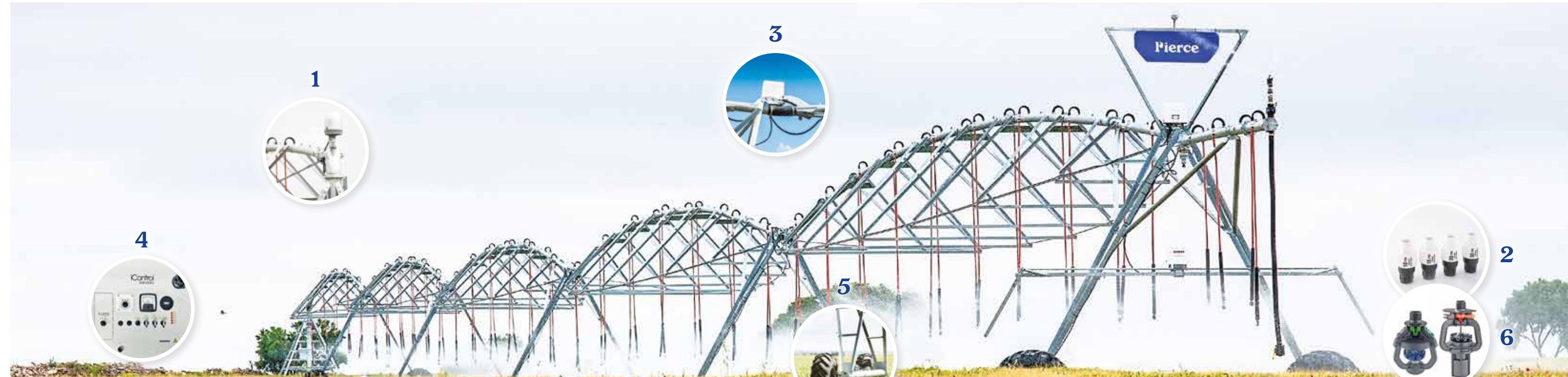
INCLUDES anchor bolts and pivot feet, reinforcement legs, ladder, rotating elbow, riser pipe, and bottom elbow.

② SPANS & OVERHANGS

- Spans are available in five length options; 38.2 (125.5'), 44.2m (145'), 50.1m (146.5'), 56.1m (184'), 62.0m (203.5')
 - **Piping** made of hot-galvanized steel (15,000 hours of irrigation without problems of corrosion guaranteed)
 - **Truss rods** made of high strength steel with hot forged heads on both ends for strength and toughness.
 - Outlets spacing: 1.48m (58.5")
 - Standard profile: 2.9m
- OPTIONS:** • PERMAPIPE available • Wide and narrow outlet spacing
• Low and high profile available

③ TOWER

- Designed to resist the stress generated by gradients and maximize roll resistance.
- Ball & Socket connection providing stress-free flex for smooth running on rough terrain **the spans**.
- Reinforced legs with 4 crossties and one diagonal brace to secure the structure on the most difficult terrain.



④ PANELS

- Panels are mounted in a stainless steel enclosure for maximum protection and safety, manufactured under strict ISO 9001 quality standards, operator-friendly and easy to understand, incorporating the highest quality electrical components and most advanced technology.
- Integrate the iControlRemote option.
- Our panels series are Simple, Standard and Advance.

⑤ DRIVE TRAIN

- Drive train assembly is specifically designed to meet the challenges of today's longer span lengths.
 - Each component of gear motor, gearbox, coupler, shaft and wheels is engineered to deliver the torque requirements demanded by your soil and tire combinations.
- MOTOR** High-strength motors with proven reliability and irrigation duty with an efficiency of 95%
- GEARMOTOR** High-strength steel gearboxes designed to work under any conditions.

⑥ SPRINKLER PACKAGE

- The irrigation system includes a complete package of sprinklers to accommodate any type of terrain, crop or weather conditions. The **sprinklers** operate at low pressure, uniformly along the entire pivot, reducing operating costs through low operating pressure, efficient water application and minimizing losses caused by evaporation, wind drift and surface run-off.
- **Pressure regulators** using to maintain constant pressure and flow.
- CP600 systems could be equipped with different types of **end guns**, with or without **booster pump** to help you irrigate the outer circumference of your pivot increasing the growing area.

For more information contact info.us@piercecorporation.com